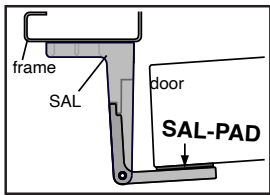


## #SAL-PAD Cush Pad for SAL



### Optional Sound Absorber Pad for use on "Secur-A-Latch"

- #SAL-PAD is optional only. Under normal use pad is not required.
- Can reduce sound of door hitting the #SAL when engaged.
- Not visible to guest.
- Provides additional sound absorption if door does not hit #SAL squarely

Part no:  
**#SAL-PAD**



## #SAL-SC Screw Cover



### Optional cover for use with "Secur-A-Latch" to cover screws for aesthetic purposes

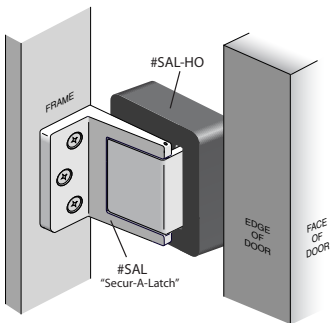
Part no:  
**#SAL-SC**

- Matching architectural finishes - available in US3, US4, US10B, US15, US17A, US19, US26, US26D
- Applies with extremely strong adhesive
- Self-Adhesive for easy application
- Discourages tampering



## #SAL-HO "Secur-A-Latch" Hold Open

### Allows user to hold the door open without causing damage



- Foam stop made to slip onto the #SAL "Secur-A-Latch"
- A special tool exclusively for use by service personnel when rooms are out-of-service and unoccupied.

Part no:  
**#SAL-HO**



★ Note: the hold-open is not inherent in the design of SAL.

## #SAL-D1 and D2 Decals for Retrofit

### The decals cover the holes left in the door and frame from the 'swing-bar' door latch

- Used when the #SAL is mounted at 48" or less from the floor to meet current ADA guidelines.

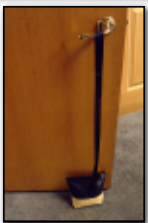
Part no:

**#SAL-D1 = "For your comfort and safety..."**

**#SAL-D2 = "Warning: door locks automatically..."**



## #DS "DoorSaver" Door Stop/Hold Open



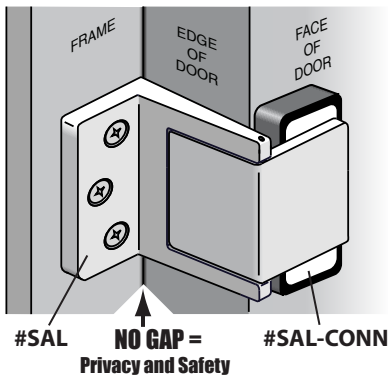
- Holds door open without having to bend over to engage or disengage and pick up the stop.
- Does not cause damage to the door like 'wedge' stops
- Non-Skid: Works with Tile, Laminate, Carpet, etc.



Part no:  
**#DS DoorSaver**

## #SAL-CONN Connecting Room Stop

### Does not allow opposite guest to see past the door at Connecting door openings



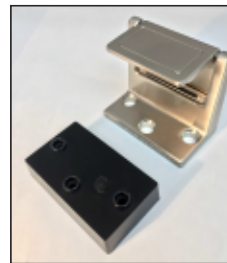
- Deadbolt warning label for security.
- Does not allow easy hooking of the lever to enter when the opposite guest forgets to engage the deadbolt!!



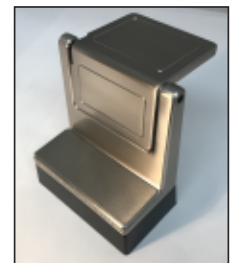
## #SAL Spacer for 2 1/4" (57.2mm) thick doors

### Shim for 2 1/4" (57.2mm) thick doors allows guest to see into corridor. Also allows emergency ingress from corridor.

- Extended pips perfectly position the #SAL onto the #SAL Spacer



#SAL Spacer is designed to fit under the #SAL



Part no:  
**#SAL-SPACER**

#HT Lever Opening Tool - for Lock-Outs and Emergency Opening of Doors - <https://dhsi-seal.com/pdf/hooktool.pdf>